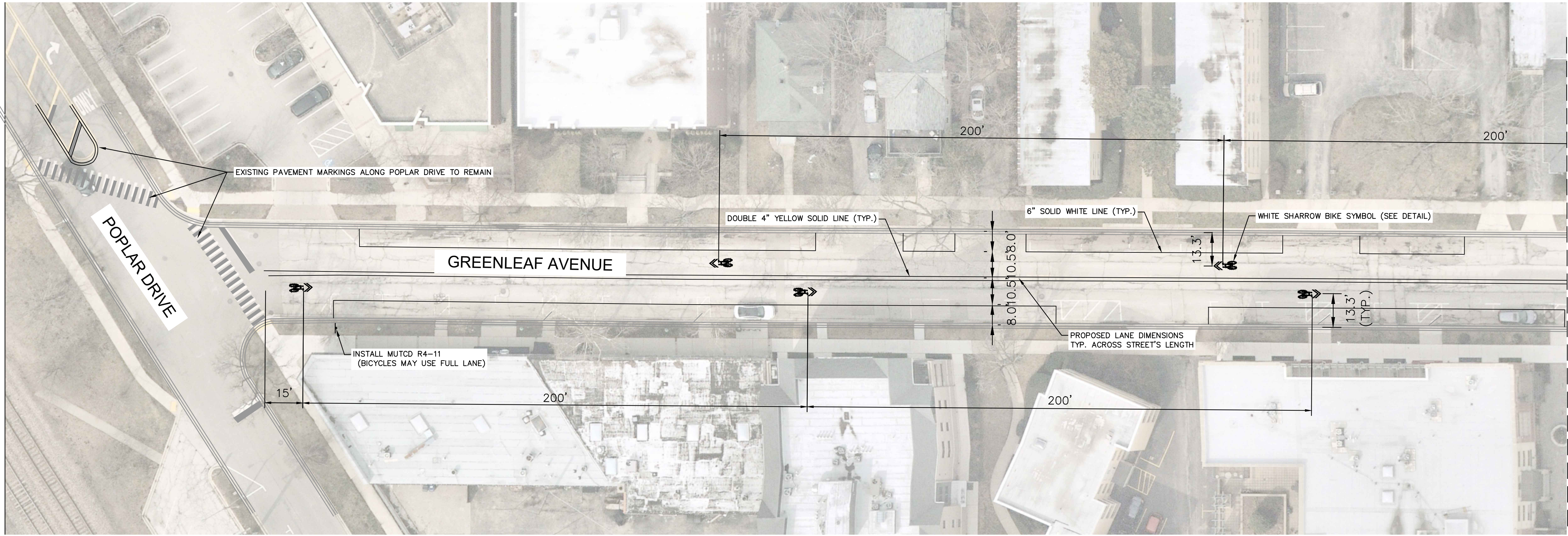
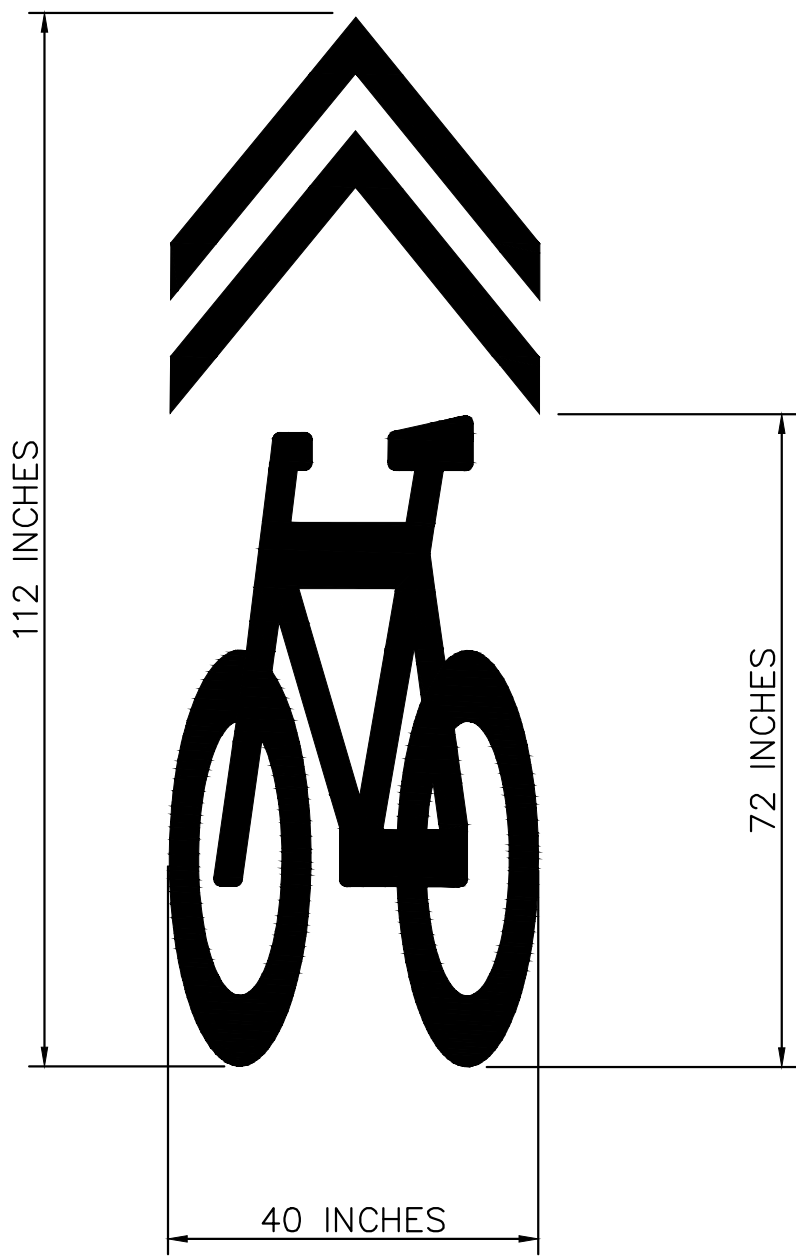


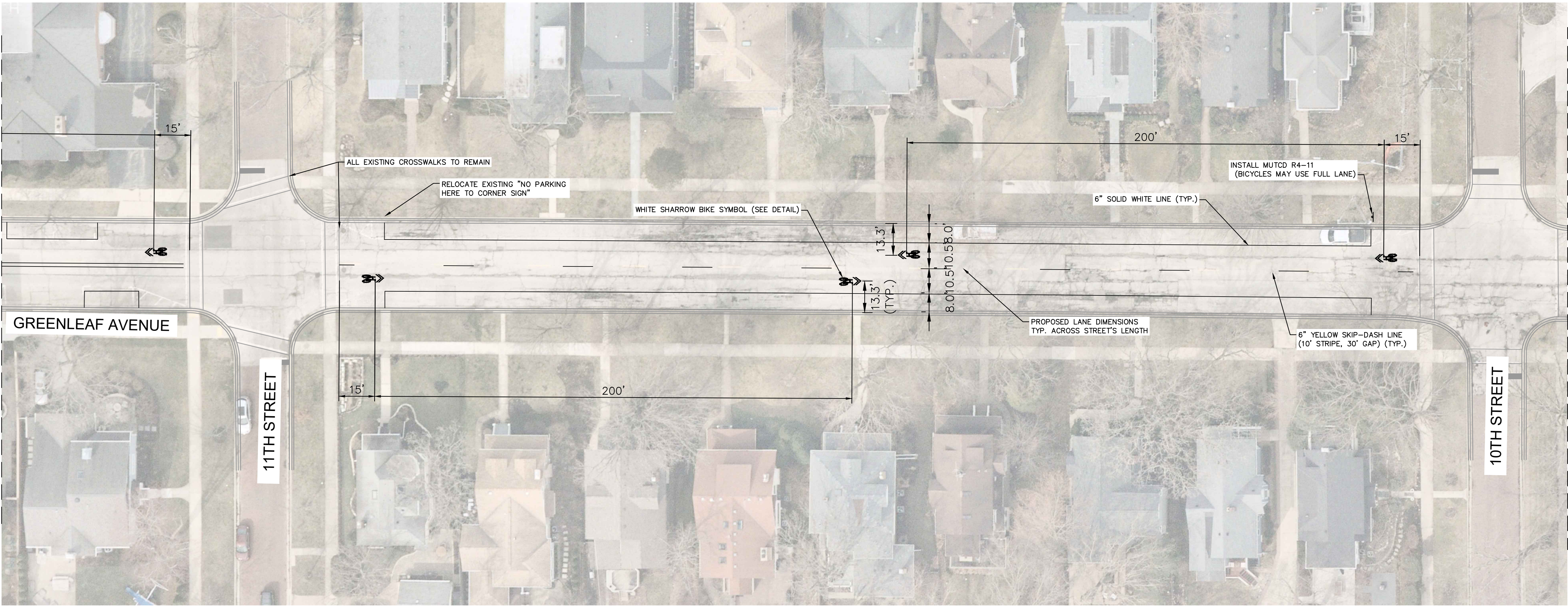
This document, together with the concepts and designs presented herein, is intended only for the specific purpose and client for which it was prepared. Reuse of and improper reliance on this document without written authorization and adaptation by Kimley-Horn and Associates, Inc. shall be without liability to Kimley-Horn and Associates, Inc.



DETAIL



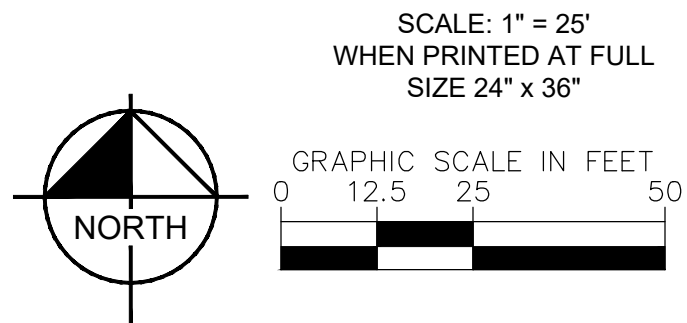
SHARED LANE MARKING
PER MUTCD FIGURE 9C-9



PROPOSED SIGN



BICYCLES MAY USE
FULL LANE
PER MUTCD R4-11



No.	REVISIONS	DATE	BY



© 2021 KIMLEY-HORN AND ASSOCIATES, INC.
4201 WINFIELD ROAD, SUITE 600
WARRENVILLE, IL 60555
PHONE: 630-487-5550
WWW.KIMLEY-HORN.COM

KHA PROJECT
168071012

DATE
09/16/2021

SCALE AS SHOWN

DESIGNED BY EA

DRAWN BY DB

CHECKED BY EA

**BIKE ACCOMMODATION PLAN
IMPLEMENTATION**

PREPARED FOR
VILLAGE OF WILMETTE, IL

COOK COUNTY

ILLINOIS

E. ALBERS

PROFESSIONAL ENGINEER

IL LICENSE NO. 062-089293

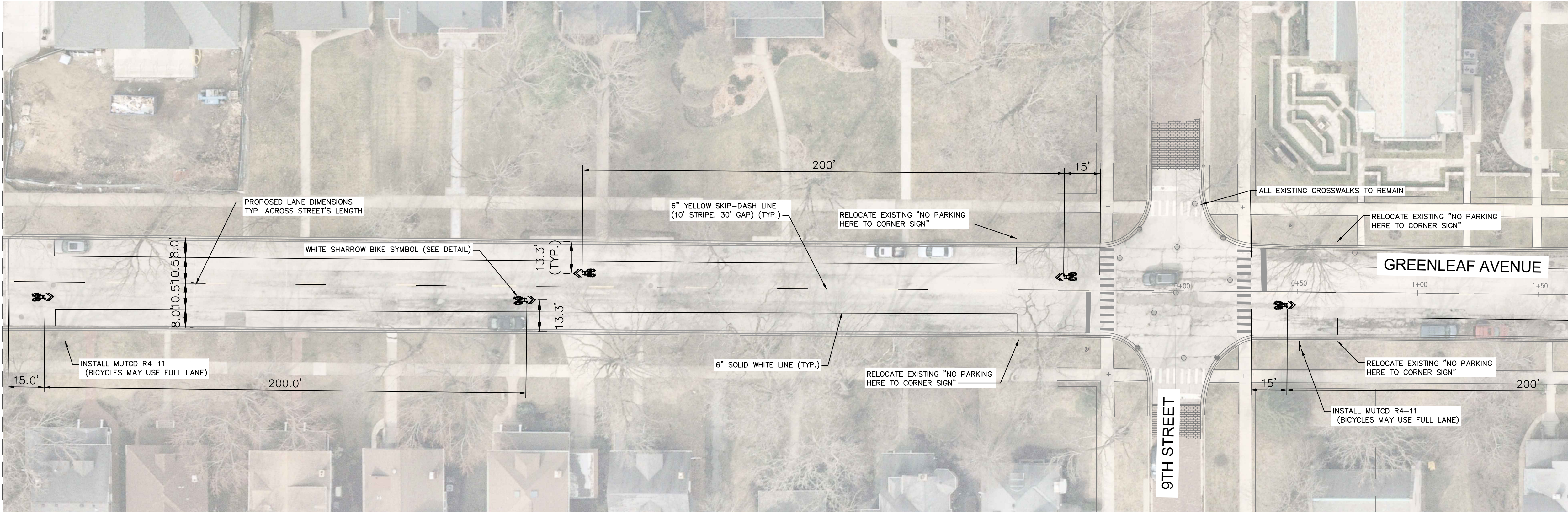
**GREENLEAF AVENUE
IMPROVEMENTS**

SHEET NUMBER

1

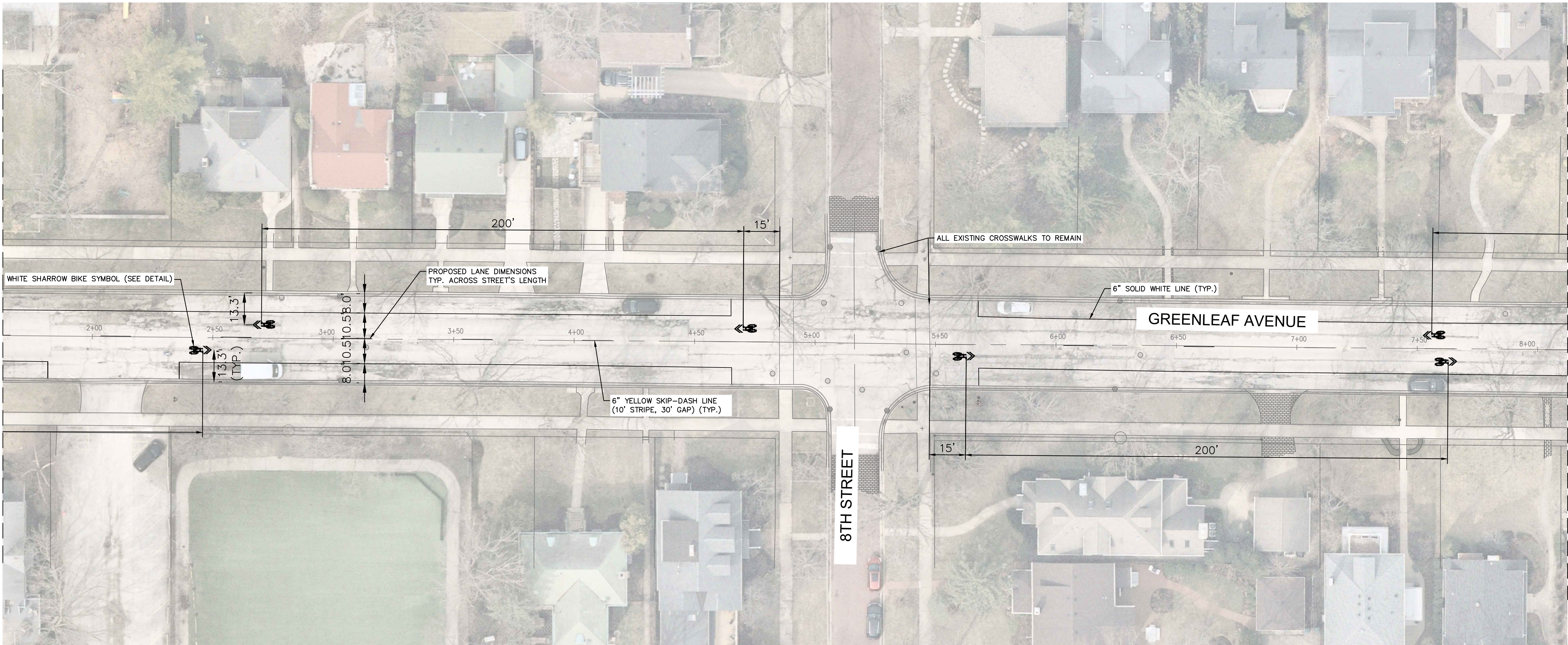
This document, together with the concepts and designs presented herein, is an instrument of service. It is intended only for the specific purpose and client for which it was prepared. Reuse of any improper reliance on this document without written authorization and adaptation by Kimley-Horn and Associates, Inc. shall be without liability to Kimley-Horn and Associates, Inc.

MATCHLINE B - SEE SHEET 1



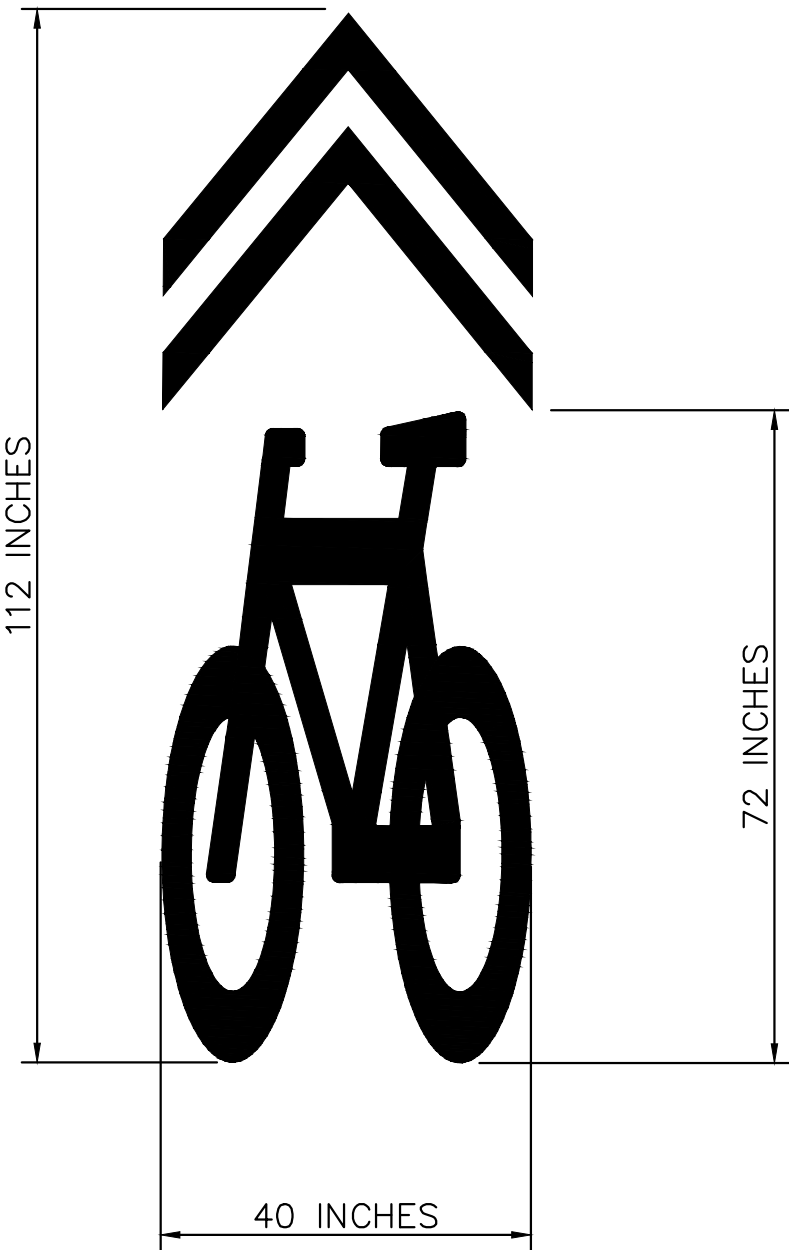
MATCHLINE C - SEE BELOW

MATCHLINE C - SEE ABOVE



MATCHLINE D - SEE SHEET 3

DETAIL

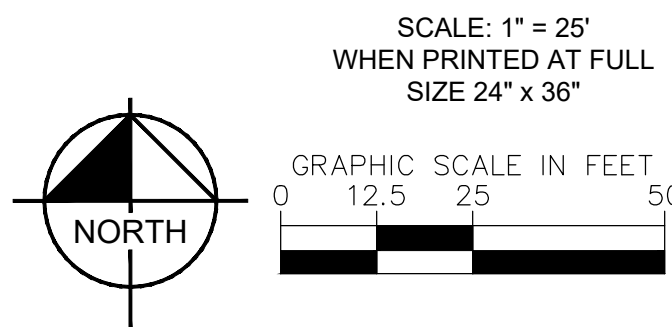


SHARED LANE MARKING
PER MUTCD FIGURE 9C-9

PROPOSED SIGN



BICYCLES MAY USE
FULL LANE
PER MUTCD R4-11



No.	REVISIONS	DATE	BY

Kimley»Horn

© 2021 KIMLEY-HORN AND ASSOCIATES, INC.
4201 WINFIELD ROAD, SUITE 600
WARRENVILLE, IL 60555
PHONE: 630-487-5550
WWW.KIMLEY-HORN.COM

KHA PROJECT
168071012
DATE
09/16/2021
SCALE AS SHOWN
DESIGNED BY EA
DRAWN BY DB
CHECKED BY EA

**BIKE ACCOMMODATION PLAN
IMPLEMENTATION**
PREPARED FOR
VILLAGE OF WILMETTE, IL

COOK COUNTY

E. ALBERS

PROFESSIONAL ENGINEER

IL LICENSE NO. 062-089293

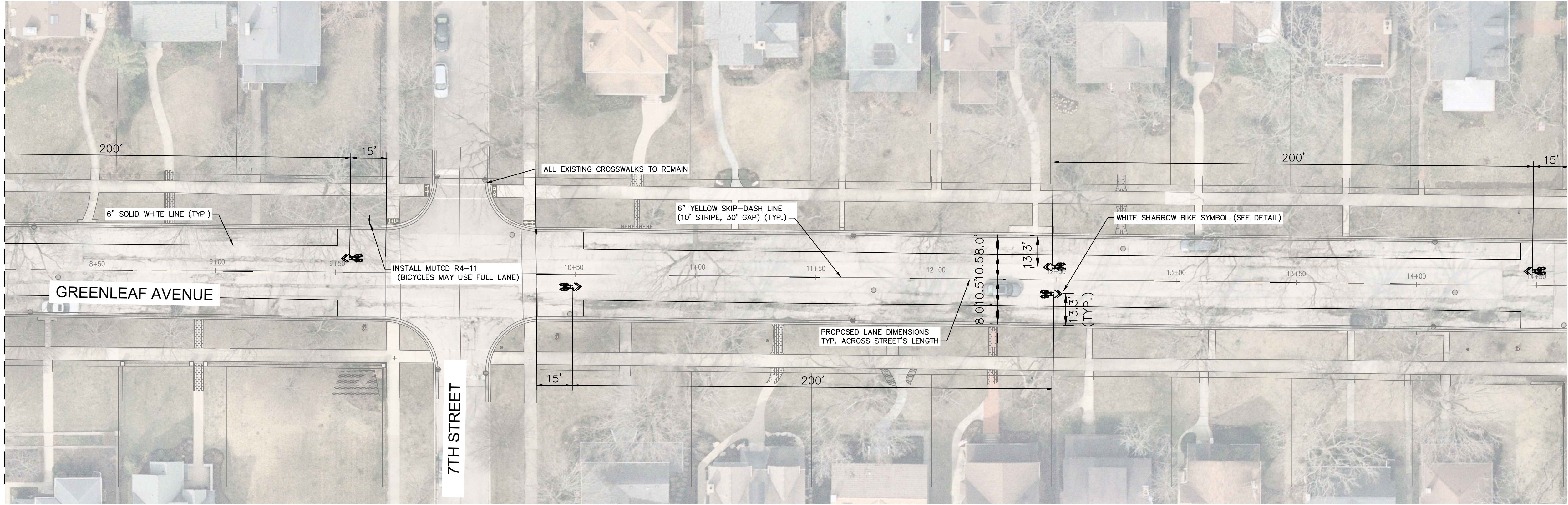
**GREENLEAF AVENUE
IMPROVEMENTS**

SHEET NUMBER

2

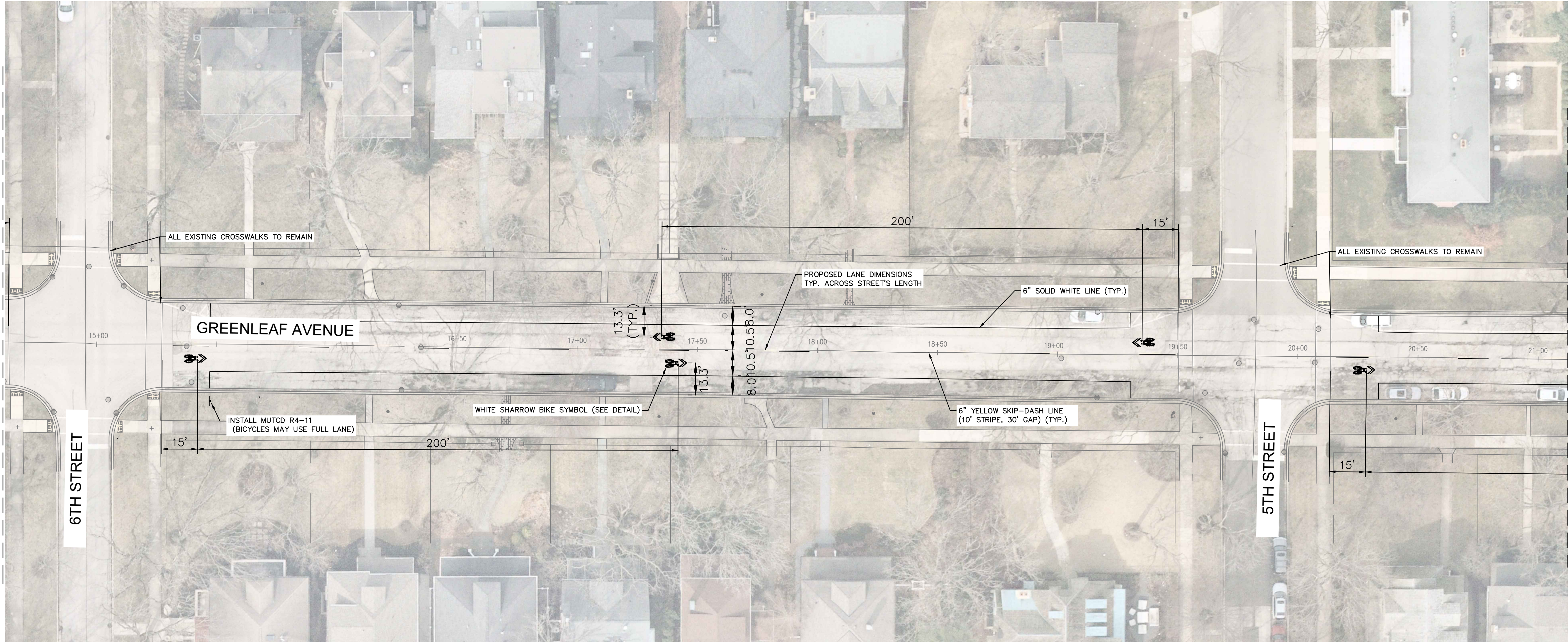
This document, together with the concepts and designs presented herein, is an instrument of service, is intended only for the specific purpose and client for which it was prepared. Reuse of and improper reliance on this document without written authorization and adaptation by Kimley-Horn and Associates, Inc. shall be without liability to Kimley-Horn and Associates, Inc.

MATCHLINE D - SEE SHEET 2



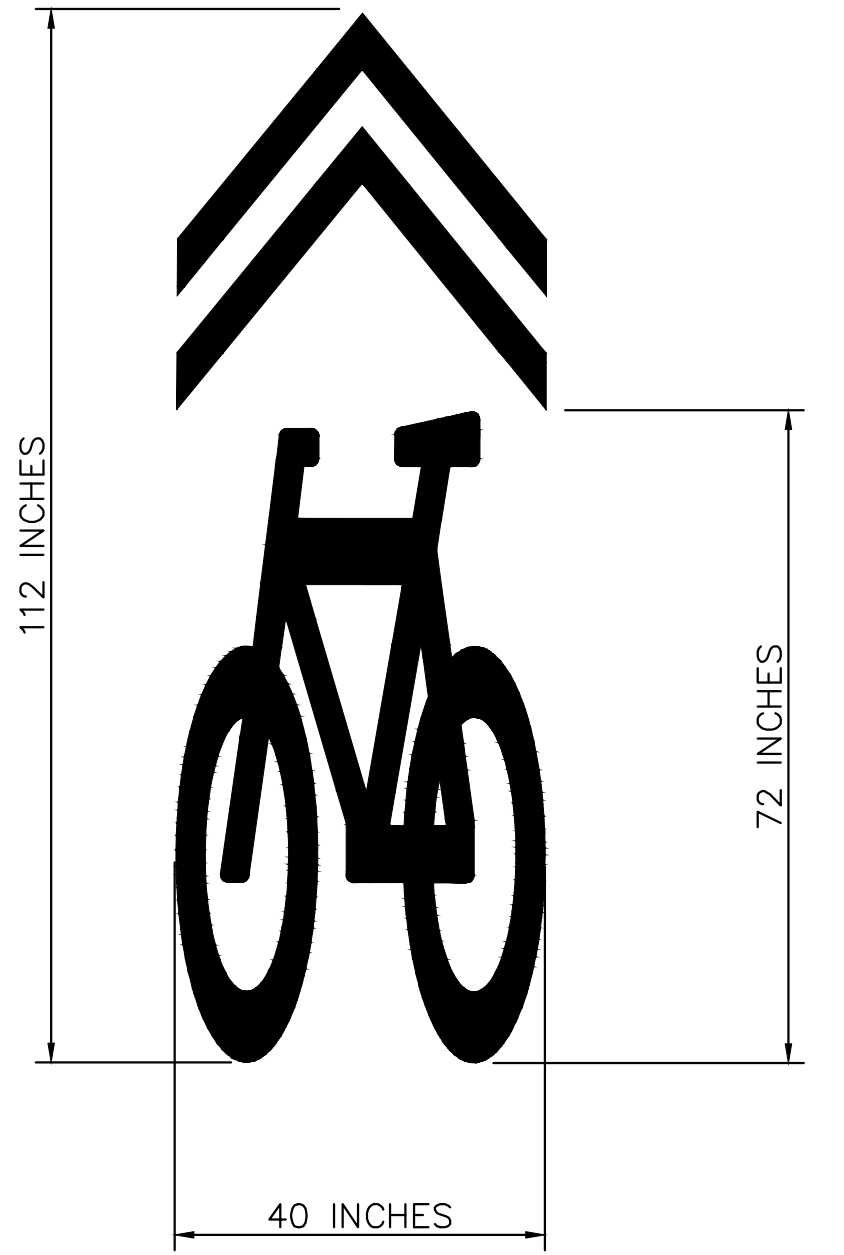
MATCHLINE E - SEE BELOW

MATCHLINE E - SEE ABOVE



MATCHLINE F - SEE SHEET 4

DETAIL

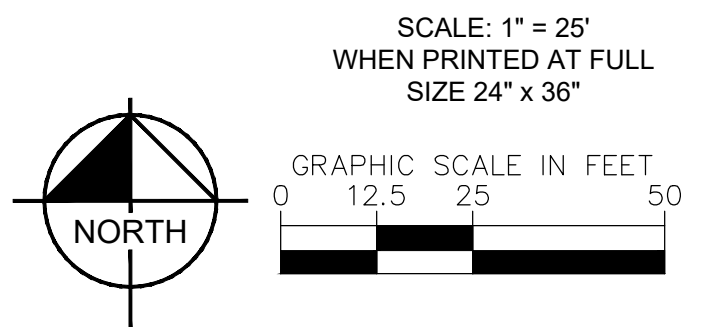


SHARED LANE MARKING
PER MUTCD FIGURE 9C-9

PROPOSED SIGN



BICYCLES MAY USE
FULL LANE
PER MUTCD R4-11



No.	REVISIONS	DATE	BY

Kimley»Horn
© 2021 KIMLEY-HORN AND ASSOCIATES, INC.
4201 WINFIELD ROAD, SUITE 600
WARRENVILLE, IL 60555
PHONE: 630-487-5550
WWW.KIMLEY-HORN.COM

KHA PROJECT 168071012
DATE 09/16/2021
SCALE AS SHOWN
DESIGNED BY EA
DRAWN BY DB
CHECKED BY EA

**BIKE ACCOMMODATION PLAN
IMPLEMENTATION**
PREPARED FOR
VILLAGE OF WILMETTE, IL
COOK COUNTY
ILLINOIS

E. ALBERS

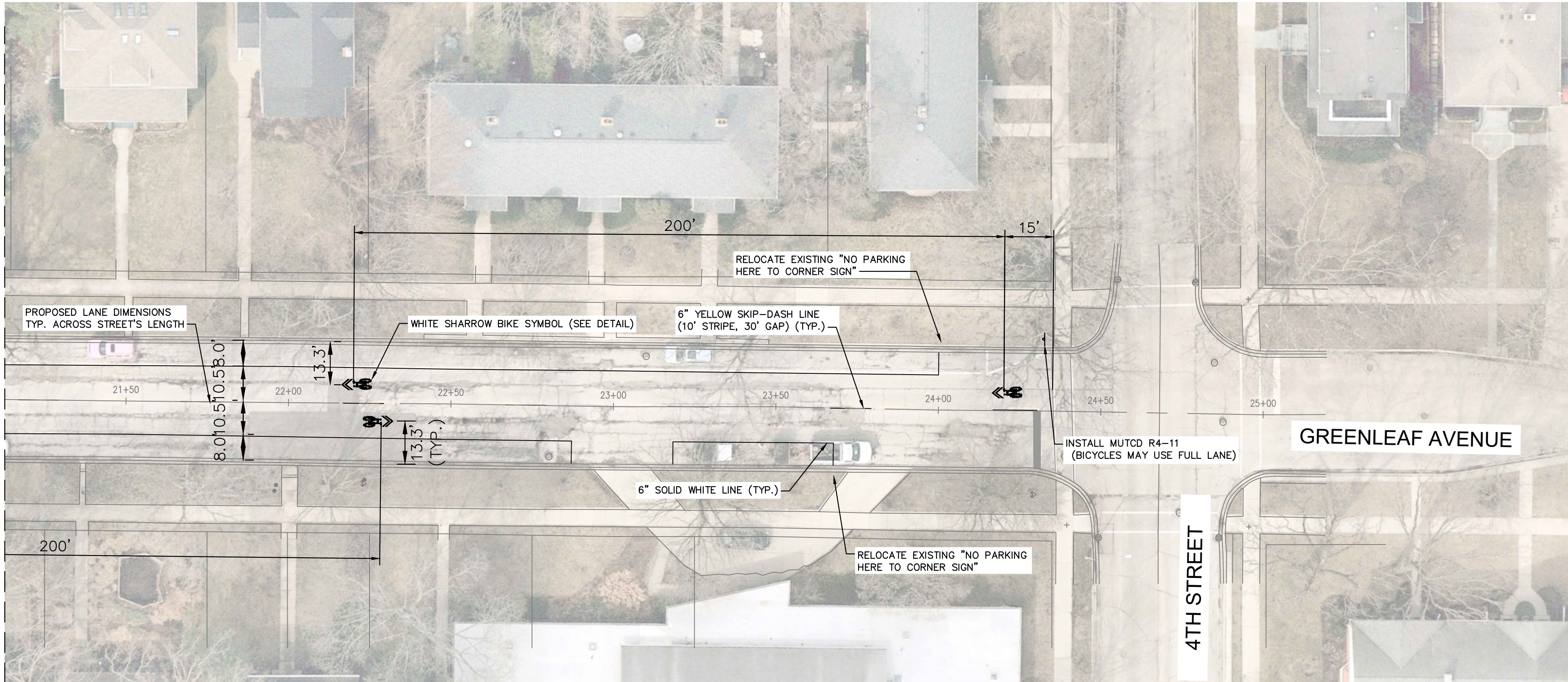
PROFESSIONAL ENGINEER
ILL. LICENSE NO. 062-069293

**GREENLEAF AVENUE
IMPROVEMENTS**

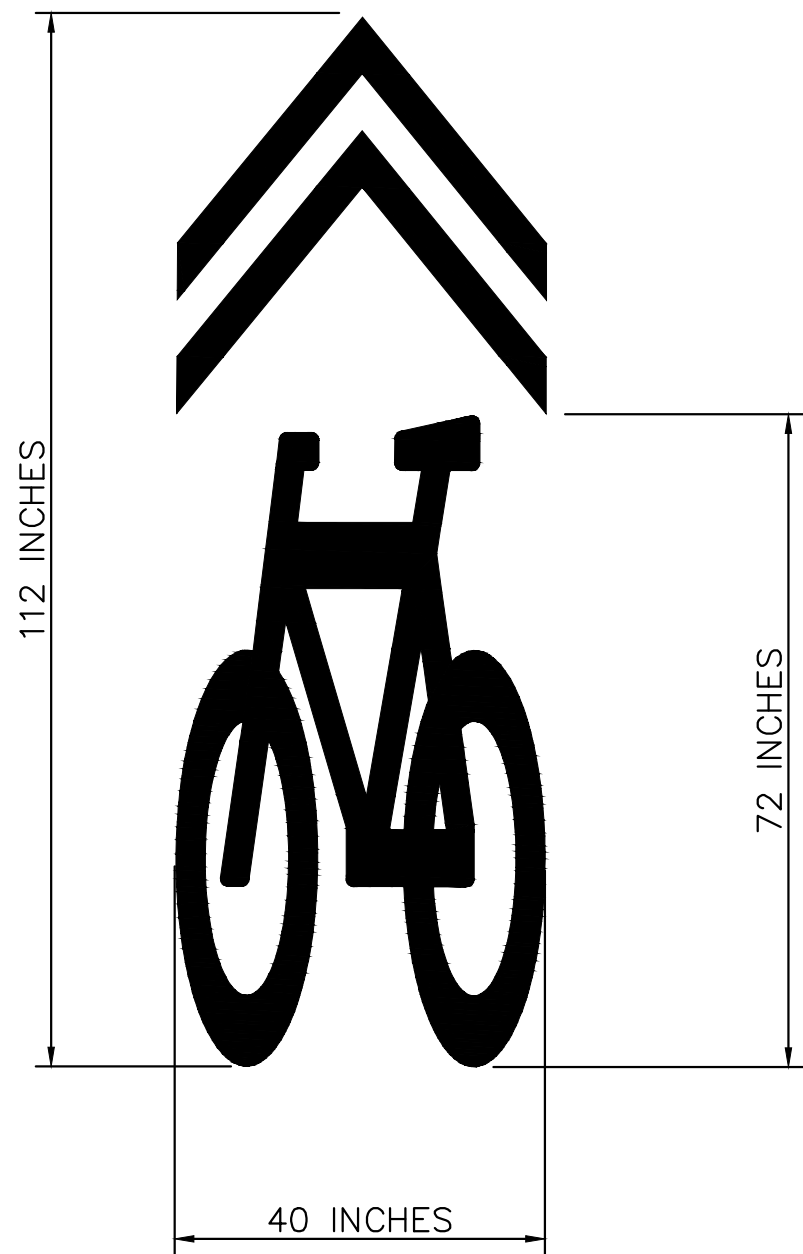
SHEET NUMBER
3

This document, together with the concepts and designs presented herein, is an instrument of service, is intended only for the specific purpose and client for which it was prepared. Reuse of and improper reliance on this document without written authorization and adaptation by Kimley-Horn and Associates, Inc. shall be without liability to Kimley-Horn and Associates, Inc.

MATCHLINE F - SEE SHEET 3



DETAIL

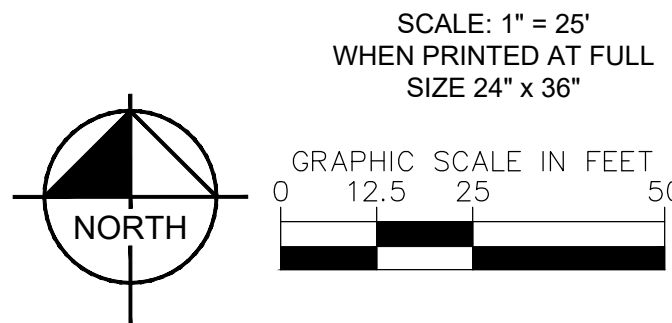


SHARED LANE MARKING
PER MUTCD FIGURE 9C-9

PROPOSED SIGN



BICYCLES MAY USE
FULL LANE
PER MUTCD R4-11



No.	REVISIONS	DATE	BY

<div>Kimley»Horn</div> <div>© 2021 KIMLEY-HORN AND ASSOCIATES, INC. 4201 WINFIELD ROAD, SUITE 600 WARRENVILLE, IL 60555 PHONE: 630-487-5550 WWW.KIMLEY-HORN.COM</div>	KHA PROJECT 168071012	BIKE ACCOMMODATION PLAN IMPLEMENTATION PREPARED FOR VILLAGE OF WILMETTE, IL	E. ALBERS PROFESSIONAL ENGINEER ILL. LICENSE NO. 062-069293	GREENLEAF AVENUE IMPROVEMENTS	SHEET NUMBER 4
	DATE 09/16/2021				
	SCALE AS SHOWN				
	DESIGNED BY EA				
	DRAWN BY DB				
CHECKED BY EA	COOK COUNTY	ILLINOIS			